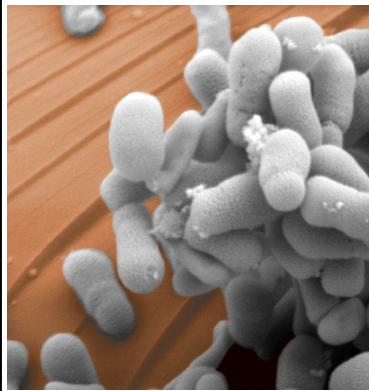


M R B NEWS

PHOTOS AROUND THE WORLD



Cover image on **PNAS Magazine** courtesy of Ezra Kulczycki; *Fowle/Roberts Geology Lab*. Methane-oxidizing bacteria (*Methylosinus trichosporium* OB3b) cluster on copper-doped glass. Methanotrophic bacteria suppress methane, a major greenhouse gas. Expression of the bacterial enzyme methane monooxygenase is regulated by copper. Solid-phase copper geochemistry determines whether the metal is available for use. For more information see article at right. For the detailed article go to www.pnas.org

Submit your photos from "around the world" to annsmith@ku.edu

MRB CONTACTS:

TERI HERBERGER
FACILITY MANAGER
Phone 864-2382
EMAIL: teriherb@ku.edu

CARLA RAMIREZ
PROGRAM ASSISTANT
Phone 864-7345
EMAIL: cramirez@ku.edu

ANN SMITH
PROGRAM ASSISTANT
Phone 864-7271
EMAIL: annsmith@ku.edu

MRB Help Desk 4-1959 or
email rithelp@ku.edu

IMPORTANT BUILDING INFORMATION

KU Study helps researchers predict atmospheric methane levels. In a study appearing in the July 17 issue of PNAS, the Journal of the National Academy of Sciences, the KU team shows that the chemical state of copper in the vicinity of methanotrophs — methane-oxidizing bacteria — determines how well these organisms can neutralize methane. The KU study involved Charles Knapp, environmental engineering post-doctoral researcher; **David Fowle**, assistant professor of geology; **Jennifer Roberts**, assistant professor of geology; **Ezra Kulczycki**, geology graduate student; and David Graham, professor of civil, environmental and architectural engineering, United Kingdom.

Congratulations and good luck to the following graduates/post-docs in their new positions.

- Eric Crick, **C. Lunte Lab**; *Eli Lilly & Co*
- Aisha Al-Suwaidi, **Gonzalez Lab**; *University of Oxford, Ph.D program*
- Kai Zheng, Yusong Li, **Laurence Lab**; *Amgen Inc.*
- Vikram Sadineni, **Laurence Lab**; *Bristol-Meyers*
- Drew Vartia, **Laurence Lab**; *KU Graduate School*
- Lisa Crow, **Laurence Lab**, *AP Dept of Chemistry Southern Nazarene University*
- Maya Salnikova, **Middaugh Lab**, *Merck & Co.*

Espresso Supplies: Cups, sugar, creamer, milk for the espresso machine are for those who pay for an espresso. Please do not take these supplies to offices/labs for your personal coffee products. Remember, espresso is 35¢ a shot.

~~~~~  
**Beginning this month, Park & Ride officially opened its lots to all KU parking permits.**  
 ~~~~~

Our first faculty artists have begun removing their artwork. Watch for new pieces in the coming weeks.
 ~~~~~

## UPCOMING EVENTS

- Monday, September 3rd:  
Labor Day Holiday
- Thursday, September 6th:  
Faculty/Staff Convocation
- Monday, September 10th:  
New Staff Orientation
- Tuesday/Thursday, September 11th and September 13th:  
Conflict Management
- Friday—Sunday, September 14th through 16th:  
KU Family Weekend